



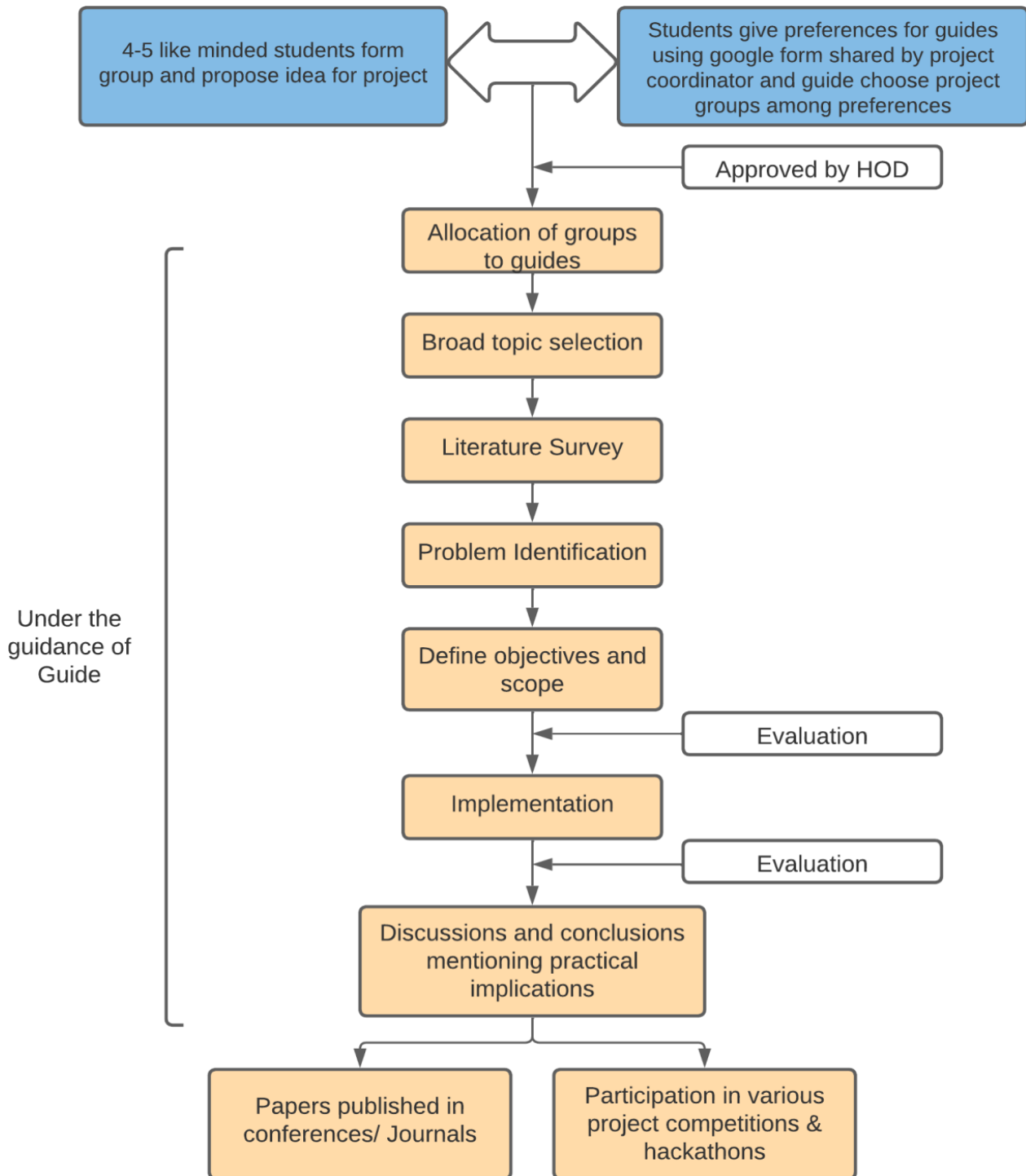
Rayat Shikshan Sanstha's
Karmaveer Bhaurao Patil College of Engineering, Satara
Department of Electronics & Telecommunication Engineering

Identification of projects and guide allocation methodology

- 1) Students were informed to form a group of minimum 2 students and maximum 4 students in class. Students submit their group name and team leader name along with the project domain in which they are interested to work.
- 2) The list of previous year projects is conveyed to students through mail which ensures no repetition of project work and also encourages students to enhance the previous works.
- 3) The students based on their area of interest and competency can select the projects proposed by the faculty or their own ideas
- 4) The students approach the faculty and discuss their ideas.
- 5) Students can also approach various industries for the final year projects and work on the same once it has been approved by the department level project coordinator.
- 6) The students have to submit preferences for guides using google form shared by project coordinator
- 7) Head of Department along with project coordinators will allocate the guides based on student preference, their domain and expertise.
- 8) Finalized guide allocation is informed to students and asks them to submit the detailed abstract duly signed by their concerned guide.
- 9) Later on, they are informed to submit the detailed synopsis and present it to the panel of all project guides. Guides can give suggestions/modifications, need to be incorporated if any
- 10) Finalized project synopsis duly signed by their concerned guide is submitted to coordinators.



Rayat Shikshan Sanstha's
Karmaveer Bhaurao Patil College of Engineering, Satara
Department of Electronics & Telecommunication Engineering





Rayat Shikshan Sanstha's
Karmaveer Bhaurao Patil College of Engineering, Satara
Department of Electronics & Telecommunication Engineering

Initiatives:

- 1) The student's projects are selected in line with department Vision, Mission and Program outcomes.
- 2) Students are provided with brief ideas of various fields for selecting the project ideas.
- 3) The faculties encourage the students to carry out in house projects and provide support with all necessary software and hardware.
- 4) Students are encouraged to participate in project exhibitions/Expo conducted national level and International Level.
- 5) The Ideathon -Project Idea competition is held every year for students to provide a common platform to exhibit their innovative ideas and their work towards excellence in latest technology.

Types and relevance of the projects and their contribution towards attainment of POs

- 1) The student's projects are selected in line with department mission, vision and Program outcomes and mapped to POs and PSOs
- 2) Projects are broadly categorized/classified (Based on the factors Environment, Safety, Standards and Cost)
 - Industry sponsored projects
 - Institute sponsored projects
 - Application oriented
 - Design oriented
 - Research oriented
- 3) Each project is evaluated with internal marks and are graded with their quality and contribution towards attainment of PO's.



Rayat Shikshan Sanstha's
Karmaveer Bhaurao Patil College of Engineering, Satara
Department of Electronics & Telecommunication Engineering

Rubric for Project Assessment:

- 1) Project evaluation is carried out in 7th as well as 8th semester where students present their work before the guide and project guides panel from the same department.
- 2) Evaluation is carried out based on various criterion of Rubrics and general criteria such as
 - Project idea understanding and percentage of project completion
 - Presentation, demonstration and documentation skills
- 3) Evaluation is carried out on individual basis as well as on team performance
- 4) Evaluation result is communicated to the students by departmental coordinator for further improvement
- 5) At the end of the academic year, students present and demonstrate their work to the expert from an industry/ Academician from other institution and the project guide

Project Rubrics
Synopsis Presentation Evaluation Rubric

	Component	Max. Marks	Proficient (Up to 100%)	Acceptable (Up to 60%)	Needs Improvements (Up to 20%)
a	Articulate problem statements and identify objectives	20	Problem statement is clear and objectives are completely defined	Problem statement is clear and objectives are not in line with problem statement	Problem statement and objectives are not identified
b	Literature survey and detailed analysis	20	Detailed and extensive explanation of the specifications and the limitations of the existing systems	Moderate study of the existing systems; collected some basic information	Minimal explanation of the specifications and the limitations of the existing systems; incomplete information
c	Objectives and Methodology of the Proposed Work	20	All objectives of the proposed work are well defined; Steps to be followed to solve the defined problem are clearly specified	Incomplete justification to the objectives proposed; Steps are mentioned but unclear; without justification to objectives	Objectives of the proposed work are either not identified or not well defined; Incomplete and improper specification
d	Future Scope, Advantages and Disadvantages	15	Future scope of the proposed system is clearly defined; Advantages and disadvantages of the system clearly specified	Incomplete justification to the future scope proposed; Steps are mentioned but unclear; without justification to advantages and disadvantages	Future scope of the proposed work are either not identified or not well defined; Incomplete and improper specification about advantages and disadvantages
e	Presentation Visual Aids	10	Slides are error-free and logically present the main components of the process and recommendations. Material is readable and the graphics highlight and support the main ideas.	Slides are error-free and logically present the main components of the process and recommendations. Material is mostly readable and graphics reiterate the main ideas	Slides contain errors and lack a logical progression. Major aspects of the analysis or recommendations are absent. Diagrams or graphics are absent or confuse the audience.
f	Oral Presentation	10	Speakers are audible and fluent on their topic, and do not rely on notes to present or respond. Speakers respond accurately and appropriately to audience questions and comments.	Speakers are mostly audible and fluent on their topic, and require minimal referral to notes. Speakers respond to most questions accurately and appropriately	Speakers are often inaudible or hesitant, often speaking in incomplete sentences. Speakers rely heavily on notes. Speakers have difficulty responding clearly and accurately to audience questions.
g	Body Language	5	Body language, as indicated by appropriate and meaningful gestures (e.g., drawing hands inward to convey contraction, moving arms up to convey lift, etc.) eye contact with audience, and movement, demonstrates a high level of comfort and connection with the audience.	Body language, as indicated by a slight tendency to repetitive and distracting gestures (e.g., tapping a pen, wringing hands, waving arms, clenching fists, etc.) and breaking eye contact with audience, demonstrates a slight discomfort with the audience.	Body language, as indicated by frequent, repetitive and distracting gestures, little or no audience eye-contact, and /or stiff posture and movement, indicate a high degree of discomfort interacting with audience

Project Phase-I Evaluation Rubric:-

	Component	Max. Marks	Proficient (Up to 100%)	Acceptable (Up to 60%)	Needs Improvements (Up to 20%)
a	Design Methodology	20	Appropriate design methodology with proper justification	Appropriate design methodology but not justified properly	Design methodology not defined properly
b	Planning of project work	10	Time frame properly specified and being followed	Time frame properly specified, but not being followed	Time frame not properly specified
c	Team structure	10	Appropriate distribution of project work	Appropriate distribution of project work but not followed	In-appropriate distribution of project work
d	Demonstration	20	Objectives are achieved as specified and as per time frame	Objectives are partially achieved	Objectives are not achieved
e	Presentation Visual Aids	10	Slides are error-free and logically present the main components of the process and recommendations. Material is readable and the graphics highlight and support the main ideas.	Slides are error-free and logically present the main components of the process and recommendations. Material is mostly readable and graphics reiterate the main ideas	Slides contain errors and lack a logical progression. Major aspects of the analysis or recommendations are absent. Diagrams or graphics are absent or confuse the audience.
f	Oral Presentation	10	Speakers are audible and fluent on their topic, and do not rely on notes to present or respond. Speakers respond accurately and appropriately to audience questions and comments.	Speakers are mostly audible and fluent on their topic, and require minimal referral to notes. Speakers respond to most questions accurately and appropriately	Speakers are often inaudible or hesitant, often speaking in incomplete sentences. Speakers rely heavily on notes. Speakers have difficulty responding clearly and accurately to audience questions.
g	Body Language	5	Body language, as indicated by appropriate and meaningful gestures (e.g., drawing hands inward to convey contraction, moving arms up to convey lift, etc.) eye contact with audience, and movement, demonstrates a high level of comfort and connection with the audience.	Body language, as indicated by a slight tendency to repetitive and distracting gestures (e.g., tapping a pen, wringing hands, waving arms, clenching fists, etc.) and breaking eye contact with audience, demonstrates a slight discomfort with the audience.	Body language, as indicated by frequent, repetitive and distracting gestures, little or no audience eye-contact, and /or stiff posture and movement, indicate a high degree of discomfort interacting with audience.
h	Questions handling	15	Answered all questions with proper justification	Answered 60% questions	Answered less than 20% question

Guide's Evaluation Rubric

	Component	Max. Marks	Proficient (Up to 100%)	Acceptable (Up to 60%)	Needs Improvements (Up to 20%)
a	Working within a Team	20	Collaborates and communicates within project group to perform any task	Exchanges some views but requires guidance to collaborate with others.	Makes little or no attempt to collaborate in a group situation
b	Technical Knowledge and Awareness related to the Project	20	Extensive knowledge related to the project	Fair knowledge related to the project	Lacks sufficient knowledge
c	Regularity	20	Reports to the guide regularly and consistent in work	Not very regular but consistent in the work	Irregular in attendance and inconsistent in work
D	Oral Presentation	20	Speakers are audible and fluent on their topic, and do not rely on notes to present or respond. Speakers respond accurately and appropriately to audience questions and comments.	Speakers are mostly audible and fluent on their topic, and require minimal referral to notes. Speakers respond to most questions accurately and appropriately	Speakers are often inaudible or hesitant, often speaking in incomplete sentences. Speakers rely heavily on notes. Speakers have difficulty responding clearly and accurately to audience questions.
e	Body Language	20	Body language, as indicated by appropriate and meaningful gestures (e.g., drawing hands inward to convey contraction, moving arms up to convey lift, etc.) eye contact with audience, movement, demonstrates a high level of comfort and connection with the audience.	Body language, as indicated by a slight tendency to repetitive and distracting gestures (e.g., tapping a pen, wringing hands, waving arms, clenching fists, etc.) and breaking eye contact with audience, demonstrates a slight discomfort with the audience.	Body language, as indicated by frequent, repetitive and distracting gestures, little or no audience eye-contact, and /or stiff posture and movement, indicate a high degree of discomfort interacting with audience

Final Project Evaluation Rubric:

	Component	Max. Marks	Proficient (Up to 100%)	Acceptable (Up to 60%)	Needs Improvements (Up to 20%)
a	Fulfillment of objectives using appropriate procedures, tools & Techniques	40	All objectives are fulfilled using appropriate procedures, tools and Techniques	Objectives are fulfilled partially with the help of appropriate procedures, tools and Techniques	Objectives are not fulfilled satisfactorily
b	Working of all modules as a system	20	All modules of project are working and well integrated and system is working accurately	All modules of project are working and integrated but system is not working up to the mark	Modules of project are working partially and are not integrated properly
c	Presentation Visual Aids	10	Slides are error-free and logically present the main components of the process and recommendations. Material is readable and the graphics highlight and support the main ideas.	Slides are error-free and logically present the main components of the process and recommendations. Material is mostly readable and graphics reiterate the main ideas	Slides contain errors and lack a logical progression. Major aspects of the analysis or recommendations are absent. Diagrams or graphics are absent or confuse the audience.
d	Oral Presentation	10	Speakers are audible and fluent on their topic, and do not rely on notes to present or respond. Speakers respond accurately and appropriately to audience questions and comments.	Speakers are mostly audible and fluent on their topic, and require minimal referral to notes. Speakers respond to most questions accurately and appropriately	Speakers are often inaudible or hesitant, often speaking in incomplete sentences. Speakers rely heavily on notes. Speakers have difficulty responding clearly and accurately to audience questions.
e	Body Language	5	Body language, as indicated by appropriate and meaningful gestures (e.g., drawing hands inward to convey contraction, moving arms up to convey lift, etc.) eye contact with audience, movement, demonstrates a high level of comfort and connection with the audience.	Body language, as indicated by a slight tendency to repetitive and distracting gestures (e.g., tapping a pen, wringing hands, waving arms, clenching fists, etc.) and breaking eye contact with audience, demonstrates a slight discomfort with the audience.	Body language, as indicated by frequent, repetitive and distracting gestures, little or no audience eye-contact, and /or stiff posture and movement, indicate a high degree of discomfort interacting with audience.
f	Questions handling	15	Answered all questions with proper justification	Answered 60% questions	Answered less than 20% question

Review Presentation Evaluation Rubric

	Component	Max. Marks	Proficient (Up to 100%)	Acceptable (Up to 60%)	Needs Improvements (Up to 20%)
a	Percentage of completion of project work	10	Percentage of completion of Project implementation work is satisfactory	Percentage of completion of Project implementation work is moderate	Percentage of completion of Project implementation work is not satisfactory
b	Team work	10	Project work is being carried out in collaborative way within group members with good communication among all of them	Project work is being carried out in collaborative way within group members but need more team work	Project work is not being carried out in collaborative way
e	Presentation Visual Aids	10	Slides are error-free and logically present the main components of the process and recommendations. Material is readable and the graphics highlight and support the main ideas.	Slides are error-free and logically present the main components of the process and recommendations. Material is mostly readable and graphics reiterate the main ideas	Slides contain errors and lack a logical progression. Major aspects of the analysis or recommendations are absent. Diagrams or graphics are absent or confuse the audience.
f	Oral Presentation	10	Speakers are audible and fluent on their topic, and do not rely on notes to present or respond. Speakers respond accurately and appropriately to audience questions and comments.	Speakers are mostly audible and fluent on their topic, and require minimal referral to notes. Speakers respond to most questions accurately and appropriately	Speakers are often inaudible or hesitant, often speaking in incomplete sentences. Speakers rely heavily on notes. Speakers have difficulty responding clearly and accurately to audience questions.
g	Body Language	10	Body language, as indicated by appropriate and meaningful gestures (e.g., drawing hands inward to convey contraction, moving arms up to convey lift, etc.) eye contact with audience, and movement, demonstrates a high level of comfort and connection with the audience.	Body language, as indicated by a slight tendency to repetitive and distracting gestures (e.g., tapping a pen, wringing hands, waving arms, clenching fists, etc.) and breaking eye contact with audience, demonstrates a slight discomfort with the audience.	Body language, as indicated by frequent, repetitive and distracting gestures, little or no audience eye-contact, and /or stiff posture and movement, indicate a high degree of discomfort interacting with audience

Project Report Evaluation

	Rubric Component	Max. Marks	Proficient (Up to 100%)	Acceptable (Up to 60%)	Needs Improvements (Up to 20%)
a	Organization of content	10	Content of report is well organized and well formatted	Content of report is good but not well organized and well formatted	Content of report is not organized and well formatted
b	Description of concepts & technical details	10	All the concepts and technical details are described very well	Concepts and technical details are mentioned but not described very well	Concepts and technical details are not mentioned
c	Use of diagrams or analyses to enhance & clarify presentation of idea	10	Diagrams and analyses are used to enhance and clarify presentation of idea	Less use of Diagrams and analyses to enhance and clarify presentation of idea	No use of Diagrams and analyses to enhance and clarify presentation of idea
d	References and citations	10	All the references are mentioned and cited wherever used	All the references are mentioned but not cited wherever used	No references and citations are mentioned
e	Conclusion	10	Project work and results are well summarized	Project work and results are not well summarized	Project work and results are not mentioned



Rayat Shikshan Sanstha's
Karmaveer Bhaurao Patil College of Engineering, Satara
Department of Electronics & Telecommunication Engineering

Project Schedule

Sr. No.	Week	Name of Activity
1	1st week	Group formation and Domain selection
2	2nd week	Guide allocation process
3	3rd & 4th week	Project topic finalization and Synopsis presentation
4	6th week	Presentation I
5	8th week	Presentation II
6	11th week	Report preparation
7	13th week	Phase I Final Exam
8	15th week	Progress presentation
9	17th week	Presentation III
10	19th week	Internal Project presentation and report submission
11	21th week	Final project presentation



Rayat Shikshan Sanstha's
Karmaveer Bhaurao Patil College of Engineering, Satara
Department of Electronics & Telecommunication Engineering
Academic Year 2022-23 B. Tech Project Group List

Sr.No.	Roll No.	PRN No.	Candidate Name	Name of Guide
1	ELE/B.Tech/2022/16	1962701376027	JADHAV PADMAREKHA GAJANAN	Dr. Mrs. Mane S. V.
2	ELE/B.Tech/2022/07	2062701376014	CHAVAN AMRUTA SAYAJI	
3	ELE/B.Tech/2022/02	1962701376031	ANSARI SABIR SHABAN	Prof. Dr. Suhas Patil
4	ELE/B.Tech/2022/26	1962701376001	PAWAR SHWETA MANOHAR	
5	ELE/B.Tech/2022/30	1962701376003	REWALE HARSHADA DILIP	Prof. Shingate. V.S
6	ELE/B.Tech/2022/13	1962701376009	GHORPADE VEDANTIKA UDAYSINH	
7	ELE/B.Tech/2022/31	1962701376007	SALUNKHE OMKAR MARUTI	Prof. Dr. Kanse. Y.K
8	ELE/B.Tech/2022/28	1962701376035	PHALKE RAJAT ANIL	
9	ELE/B.Tech/2022/23	1962701376028	MORE SHIVANJALI BHALCHANDRA	Prof. Nanaware .J. D.
10	ELE/B.Tech/2022/20	1962701376039	KANCHAN TANAYA DATTATRAY	
11	ELE/B.Tech/2022/15	1962701376033	JADHAV GAURAV MILIND	Prof. Nanaware. J. D.
12	ELE/B.Tech/2022/38	2062701376016	YADAV PRATEEK NIWAS	
13	ELE/B.Tech/2022/12	1962701376026	GHORPADE RACHANA RAJENDRA	Prof. Shivdas S. S.
14	ELE/B.Tech/2022/19	1962701376012	JAWALE SAMRADANI JITENDRA	
15	ELE/B.Tech/2022/03	1962701376034	BAGWAN ALISHA IMRAN	Prof. Shivdas S. S.
16	ELE/B.Tech/2022/06	1962701376010	BHOITE SEJAL SURYAKANT	
17	ELE/B.Tech/2022/25	1962701376014	OSWAL RUSHAB VINODKUMAR	Prof. Dr. Suhas Patil
18	ELE/B.Tech/2022/27	1962701376038	PHADTARE SAMRUDDHI DHANANJAY	
19	ELE/B.Tech/2022/32	1962701376017	SATRE SONAL HANMANT	Prof. Dr. Suhas Patil
20	ELE/B.Tech/2022/36	1962701376044	WAGH ISHA SANDIP	
21	ELE/B.Tech/2022/14	1962701376032	GODASE NILESH SANJAY	Prof. Shingate V. S.

22	ELE/B.Tech/2022/11	1962701376021	GHARE HRISHIKESH VIJAY	
23	ELE/B.Tech/2022/35	1962701376025	SHELKE NIKITA ABA	Prof. Shingate V. S.
24	ELE/B.Tech/2022/09	1962701376042	GAIKWAD ANUSHREE ABHAYRAJ	
25	ELE/B.Tech/2022/34	2062701376012	SHAIKH RIYA SADAF JAVED	Prof. Dr. Kanse Y. K.
26	ELE/B.Tech/2022/33	1962701376018	SAWANT ANJALI VINOD	
27	ELE/B.Tech/2022/08	1962701376029	DESHMUKH SIDDHESH KASHINATH	Prof. Dr. Kanse Y. K.
28	ELE/B.Tech/2022/21	1962701376045	KARANDE DURVESH DATTARAM	
29	ELE/B.Tech/2022/17	1962701376040	JADHAV SAKSHI SUNIL	Dr. Mrs. Mane S. V.
30	ELE/B.Tech/2022/37	1962701376037	YADAV PAYAL SUNIL	
31	ELE/B.Tech/2022/24	2062701376015	NADE KSHITIJA SANJAY	Dr. Mrs. Mane S. V.
32	ELE/B.Tech/2022/18	1962701376030	JADHAV YASH ASHOK	
33	ELE/B.Tech/2022/04	1962701376019	BAJARE SHREYAS RAVINDRA	Prof. Mrs. Ulmek A. N.
34	ELE/B.Tech/2022/22	2062701376010	MAHADIK ADITI ANIL	
35	ELE/B.Tech/2022/01	1962701376004	ABHINAV KUMAR	Prof. Mrs. Ulmek A. N.
36	ELE/B.Tech/2022/29	2062701376011	PRASAD KISAN ASHOK	



Rayat Shikshan Sanstha's
Karmaveer Bhaurao Patil College of Engineering, Satara
Department of Electronics & Telecommunication Engineering

B. Tech Project 22-23 Marks Distribution and Conversion Scheme

Total project marks to be uploaded on DBATU portal = 100	
Practical Marks = 50	Continuous Assessment Marks (CA) = 50

Practical Marks=50

Sr. No.	Evaluation	Total Marks in evaluation sheet	Converted to
1	Final project external exam mark sheet	100	50

Distribution of CA (50) Marks:

Sr. No.	Evaluation	Total Marks in evaluation sheet	Converted to
1	Project Synopsis Presentation Evaluation	100	20
2	Project Review Presentation Evaluation	100	10
3	Guide's Evaluation Sheet	100	20
Total CA Marks			50